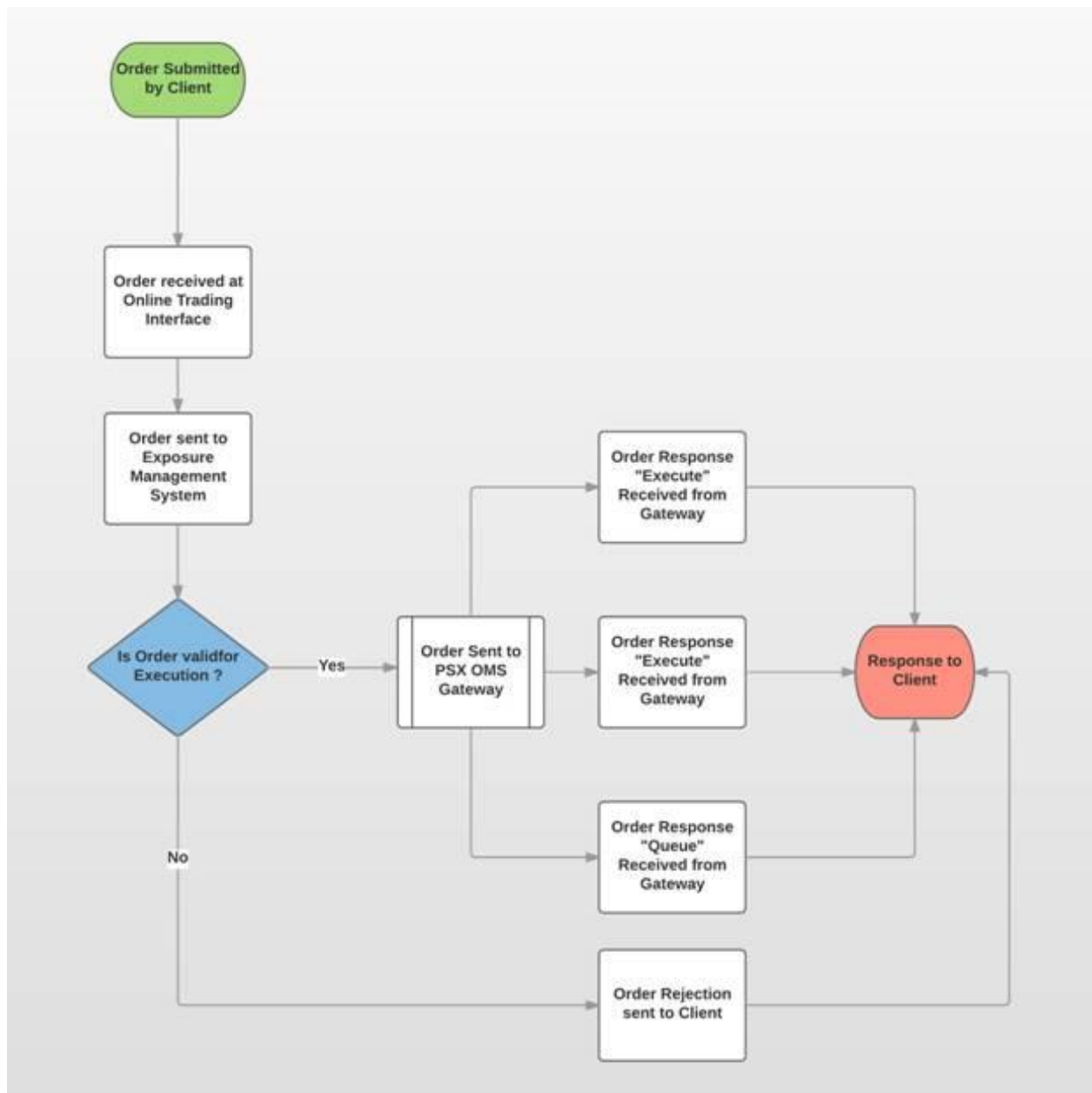


انٹرنیٹ ٹریڈنگ کا تعارف

انٹرنیٹ ٹریڈنگ کے لیے ہم Eclipse ٹریڈنگ ٹرمینل استعمال کرتے ہیں جو کہ softech کمپنی کا بنایا ہوا سافٹ ویئر ہے۔ جو صارف سے آرڈر وصول کر کے پاکستان سٹاک ایکسچینج کے فکس سرور کے ذریعے پروسیس کرواتا ہے اور صارف کو اس کی فوراً اطلاع کرتا ہے۔

Introduction

We use Eclipse Trading Terminal for internet/online trading. This trading software (Eclipse) developed by Softech Systems (Pvt) Ltd. This terminal receives the order from client/user and process through FIX Server of Pakistan Stock Exchange and intimates the client/user about the status of his order.



1. Induction of orders
2. Matching of orders
3. Execution of orders
4. Confirmation of Trades

Uploading of executed orders
into a back office for
settlement

Confirmation of memo Email
the client, confirming the
details of the transactions
along with commission
charged

Shares are transferred to
client's CDC Sub-Account or
delivery of shares to seller
from client's CDC Sub-
Account. The clients will paid
outstanding amount (if any)
against the trade executed on
T+2 & T+0.